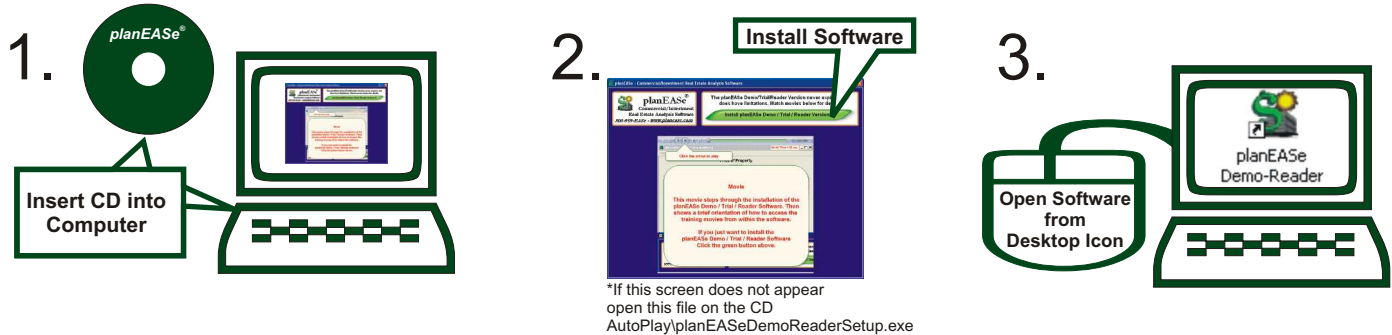


Suggestions for Evaluating planEASe®

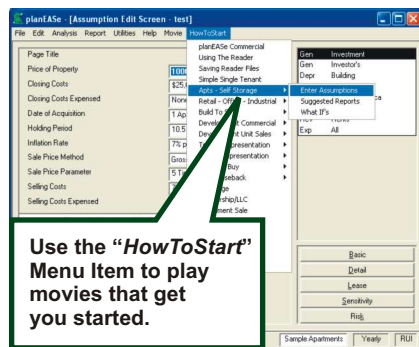
Install the Demo Reader Software that NEVER Expires

The planEASe Demo-Reader Trial Software does everything but save and print. The Demo never expires, but will erase any new work every 24 hours.

Simply insert the planEASe Demo-Reader CD into the computer and wait for the AutoPlay to come up on the screen. Then click to install the software and follow the install wizard. After the installation is finished look for the “planEASe Demo-Reader” icon on your desktop.

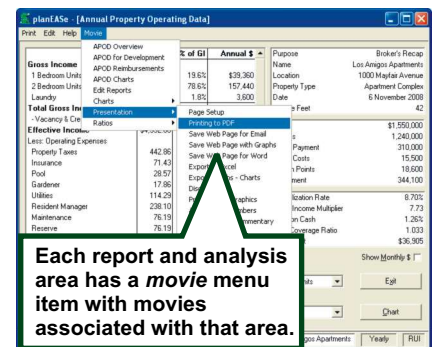
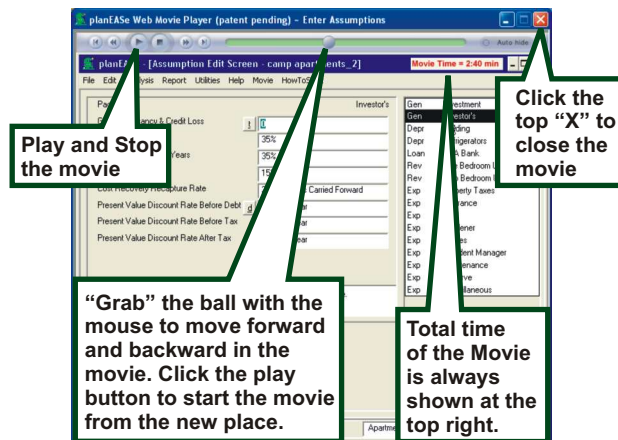


Movie (and HowToStart) Menu



planEASe (and the Demo-Reader) contains short movies on *Movie* menus throughout the software, showing you how to perform many analysis functions at the time you are doing them. Once the movie has started, you can move forward and backward by “grabbing” the ball above the movie.

How to control the movie



At the Assumption Edit Screen, shown here, the *Movie* menu is augmented by a *HowToStart* menu, displaying movies showing you how to start the various types of analysis of which planEASe is capable. Here, the *HowToStart* menu is being used to call the movie showing how to Enter Assumptions for an Apartment Analysis.

Each report and analysis area has a *Movie* menu item with movies associated with that area. Including how to present the report, graph, or analysis. Also, if there are ratios or measures shown in the report, all of them are described in the movies. Other areas that are used to input assumptions will have “how to” movies.

Where do the Movies come from?

FIRST: We search for your movie choice on our Web Site. If you are not connected then ...

SECOND: We search for your movie choice on your CD (or DVD) drive. If the planEASe CD is not present then ...

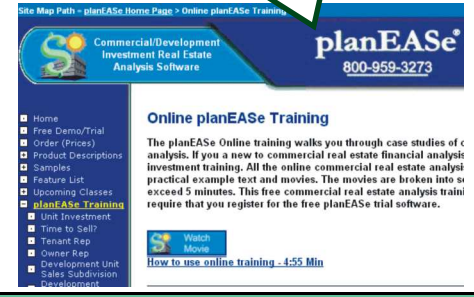
THIRD: We search for your movie choice in the *Videos* folder contained in the folder on your Hard Disk where planEASe is installed (by default, this is C:\planwin). To install the *Videos* folder on your Hard Disk, you may copy it from the Demo-Reader CD-ROM. It requires approximately 520 megabytes (ie: half a gigabyte) of storage. If the *Videos* folder is not present then ...

FOURTH: If the planEASe MoviePlayer cannot locate the movie in any of the locations above, it displays a window telling you that, and suggests how you can fix the problem.

planEASe Online Training Center

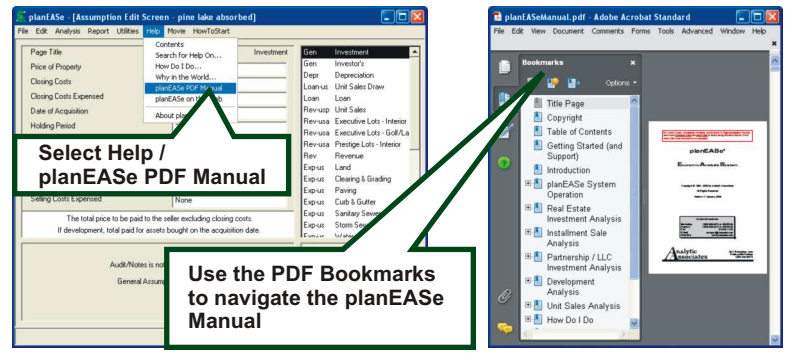
The planEASe Online training (on the web site) walks you through case studies of commercial real estate financial analysis. If you are new to commercial real estate financial analysis, try starting with the unit investment training. All the online commercial real estate analysis training with planEASe has practical example text and movies. The movies are broken into segments that generally do not exceed 5 minutes. This free commercial real estate analysis training with planEASe software does require that you first register for the free planEASe trial software.

www.planease.com



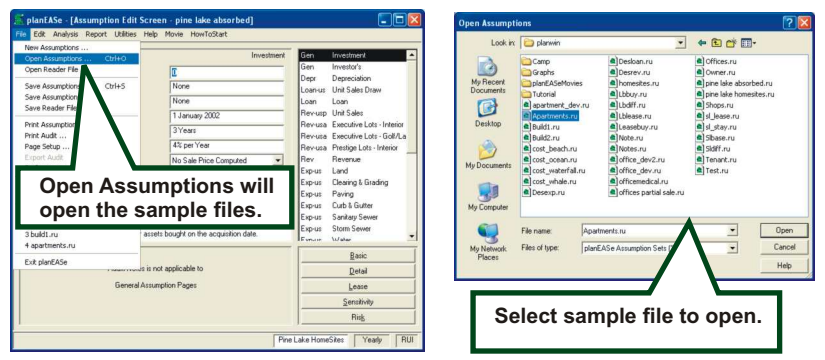
planEASe PDF Manual

A printed manual is included with the purchase of a planEASe license. In both planEASe and the planEASe Demo-Reader version you have access to a PDF version of the manual through the help menu item.



planEASe Sample Files

There are sample assumption sets that you can open and view. Use the movies and manual to read more about the different reports and analysis functions.

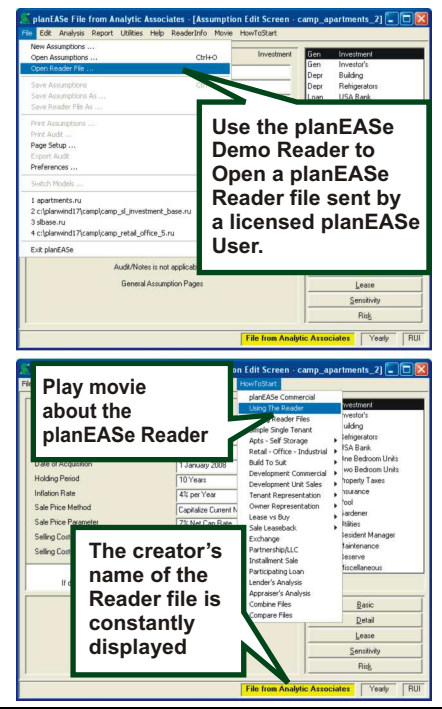


planEASe Reader (Interactive Viewer)

Using the planEASe Reader you can review a planEASe analysis from a planEASe user. The file cannot be modified, but you can view all the reports, graphs, movies, and vary the assumptions in sensitivity and risk analysis.

Reader Files may be opened by either another planEASe or by the free planEASe Demo - Reader version. You can send or receive a Reader File as an attachment to an e-mail, and the attachment can be opened by the recipient directly into planEASe or the Demo-Reader much in the same way a Microsoft Word .doc File or an Acrobat Reader .pdf File sent by e-mail can be opened by those applications.

A planEASe Reader File is a planEASe Assumption Set that has been saved by a planEASe user using the File/Save Reader File... Menu command.



(Other presentation methods are printing/save as webpage/exporting)